



Brisbane Ranges Friends News



SEPTEMBER 2011

In this issue

- A full August Sunday and your new executive
- Wildflower Show
- Bird Walk with Grace
- Natureshare
- Event calendar for year
- For Your Diary
- Cathy's Column
- Merle and Clive Trigg

Upcoming Events

Sunday 11 September
Bird walk with Grace Lewis

Meet at 10am at the old
Parks Victoria Depot, 2200
Ballan Road, Anakie.

It will be an all day activity so lunch,
water, warm clothes, gloves etc will
be required along with your smile,
binoculars and camera of course.

FoBR events usually run from
10am to 4pm-ish but if you can only
attend the part of the day you are
always welcome to join in for
whatever amount of time you can.

Friends of Brisbane Ranges inc
C/- Post Office
Anakie VIC 3221

Ph: 5366 0000
FoBR email friends_br@yahoo.com.au

<http://home.vicnet.net.au/~fobr/>

[FoBR Facebook](#)

ABN: 30 120 139 564 Reg No. A0032647M

A full August Sunday

Annual General meeting

We were delighted to have twenty six FoBR members attend our AGM on 14 August at the Anakie Community Centre. With the usual elections and reports, we also passed a special resolution to update our constitution and it all took longer than planned - but was productive and informative.

The room became somewhat quieter for a while when we asked for nominations for office bearer positions however we were excited to welcome new members onto the Committee for what will no doubt be a busy year. Thank you all for your Thank you to past committee members for their commitment to the group.

Our new 2011/2012 Executive Committee -

President: Carole Bartholomew
Vice-President: Colin Cook
Secretary: Carolyn Edwards
Treasurer: Elspeth Swan
Committee Members: Sher Swindon and
Roger Curtain

Historian: Wendy Cook
Newsletter Editor: Deirdre Murphy
Website: Carole Bartholomew/Chris Lindorff
Wildflower Show Co-ordinator - Helena Lindorff
(until after the 2011 WFS)



L-R Elspeth, Helena, Colin, Carole, Carolyn, Chris, Deirdre and Roger. Did Sher and Wendy hide?

Now you know us - please let us know what you want to see happen in the year or more ahead.
Caz Bartholomew

Birds of the Brisbane Ranges

Grace Lewis then presented some of her interesting research findings about some of our birds. The Brissies is home to most of the birds in the Geelong region and is a popular place for bird watchers. **Join Grace on our bird walk!**

We hope to feature some of the birds to watch for in the next few newsletters.

Waterwatch

After our AGM meeting, we had lunch at Bert Boardman's Reserve at Steiglitz. We then went down to Sutherlands Creek to do Waterwatch.

It was a lovely little gorge, with lots of rocks to go climbing, and the more you climbed, the more you found. There were rocks with moss, lichen and even a few types of ferns, ie maidenhair ferns, rock ferns and another one which we couldn't identify.

There were a few waterholes and a couple of miniature waterfalls which could be stepped across. We started Waterwatch and Mum, Dad, Elizabeth, Grace, Carolyn and I went to the pools with nets and collected macro invertebrates (small water creatures). We then separated them into the separate species and recorded them and did some other experiments on the water. We found two fish, some red worms, backswimmers, larvae of all different types and lots more!

Owen Cook

Waterwatch Results

Chemical tests of the water gave good oxygen saturation, but fairly high salinity levels (3800 µS/cm) as well as some phosphorous.

Rubbish in the form of a discarded boogie board was removed. This doesn't seem to worry the resident life in the pools. A macro invertebrate survey of the creek pools came up with the following types -

Backswimmers, Beetle larvae, Caddis-fly larvae, Chironomids, Copepoda, Damselfly larvae, Dragonfly larvae, Freshwater shrimp, Mayfly larvae, Side-swimmers, Stonefly larvae, Water Spider, Water-striders and Whirligig beetles. Numerous Water Mites and two Southern Pygmy Perch were also counted.

The overall score for the health of the waterway was very good. Further information on these critters can be found at www.mdfrc.org.au/bugguide/display.asp?type=1&class=19.

Colin Cook





Brisbane Ranges Wildflower Show only 6 weeks to go

The committee is going full steam ahead in preparing for the big day.

Over the past few months people have expressed their willingness to assist on the day or the days leading up to the show. I have put together a list of tasks/ roles for the show that require your help!

We need as many people on deck as possible. This event only occurs once every two years and provides the Friends Group with the opportunity to promote our wonderful park to a wider audience as well as have the opportunity to promote themselves.

If you are interested please complete the form attached and email it to the Wildflower Show Coordinator (me!) at helena@pacific.net.au We will try our best to provide you with your first preference but as the saying goes, "first in best dressed".

Please add your name and contact phone nos. to the Excel spreadsheet attached to the newsletter email and let Helena know when you are available and what YOU can help with on the Friday, Saturday and/or Sunday. The more the merrier!

Also we still have over 2,000 flyers that require distribution into your local areas. Please let me know if you are able to drop a few into a Visitor Centre close to you or a library etc and I can post them out. We are keen to get these out in the next couple of weeks.

Helena Lindorff
Wildflower Show Coordinator

Bird walk with Grace

We would have loved to hear more from Grace's presentation at the AGM last month but the AGM took longer than expected and the day was really full.

So we are thrilled to have Grace lead a bird walk in the Brissies this month so we can learn more. Location of the walk will be finalised in the days before as she is hoping to check out the best spots first. There will also no doubt be some wonderful wildflowers on display so we will be busy looking up and down!

Natureshare

Natureshare was launched last month and there will be a lot of more interest now.

So how about becoming a member (free and easy) of our BR collections and adding YOUR own observations during Spring. Chris added the phascogale that he found in July.

It is great to see and share what plants, birds and critters are seen in our area. We are just getting started - please join in BR - [Plants](#) [Birds](#) [Mammals](#) [Reptiles and Amphibians](#)

Event Calendar for year ahead

Our rangers have listed some projects needing to be done in the park and members have also made suggestions and

"I don't know how we are going to get everything done! I'm sure I can remember when we were scratching our heads wondering what to do next activity." (overheard comment)

The calendar on the right has suggestions only for the coming year and we will finalise the events and dates as soon as possible.

We are still open to suggestions of course!

Other proposed activities

- Fauna (mammals/birds) monitoring
- NatureWatch and grasstree monitoring for *Phytophthora cinnamomi*
- Plant Propagation at depot nursery
- PC hygiene station monitoring with Deakin Uni
- Overnight camp in the park
- Revisit slate quarries combined with a bush walk
- Guest speakers - geological and gold mine walks
- Set up permanent quadrants and monitor fauna and flora over time

For your diary!

- **Sunday 11 September** - FoBR monthly activity **Bird Walk** with Grace Lewis and see some of our wonderful **wildflowers** in the Brisbane Ranges
- **Saturday/Sunday 24 & 25 September** Native Orchid Show Mt Waverley 9-4 www.anosvic.org.au
- **Saturday/Sunday 24 & 25 September** Wildflower Weekend and Art Show Anglesea www.angair.org.au
- **Thursday/Sunday 29 Sep - 2 October** Grampians Wildflower Show www.grampianswildflowershow.org.au
- **Sunday 9 October**
Brisbane Ranges Wildflower Show
What more can we say - hope you have volunteered and have invited ALL your friends, family and work colleagues.
- **Sunday 13 November**
FoBR activity Waterwatch at Sutherlands Creek & Lower Stony Creek reservoir. Finish removing fence Switch Road.
- **Saturday 10 December tbc**
FoBR end of year evening event - BBQ and night walk in park. Guest speaker.- to be advised..
- **Sunday 12 February 2012**
First FoBR event for the new year - Waterwatch at Sutherlands Creek & Lower Stony Creek reservoir. Remove weed wattles.
- **Sunday 18 March**
FoBR activity - remove pine wildings near Lease Road
- **Sunday 15 April**
FoBR activity - Remove suckers along brick aqueduct
- **Sunday 13 May**
FoBR activity - Waterwatch Sutherland's Creek and reservoir. Planting and weed removal at Anakie Gorge
- **Sunday 17 June**
FoBR activity - Remove Clow Street fence and prune/replant fruit trees - Steiglitz
- **Sunday 8 July**
FoBR activity - Koala Survey with Janine Duffy
- **Sunday 12 August**
FoBR AGM and waterwatch survey.

Please Note: These activities are proposed only and are subject to change.

Cathy's Column

Orchid Identification Workshop Preview

Orchids are loosely divided into two groups – terrestrial (which grow in the soil) and epiphytes (which grow mainly in trees). The epiphytes are made up of the *Dendrobium* group, the *Vanda* group and the 'other' group. Our workshop will be specifically about terrestrial orchids because that is the only type found in the Brisbane Ranges.

Orchids have a flower structure that makes them a recognisable group and understanding the term for the six key components will get you started with identification. The flowers all have 3 sepals and 3 petals and are bilaterally symmetrical.



Bilateral symmetry

Bilateral symmetry – if you cut the flower in half, from top to bottom through the column, you will essentially have a mirror image on each side.

As opposed to those flowers that are unilaterally symmetrical – it does not matter which way you slice it, there is still the mirror image.



Dorsal sepal – the upper sepal in non-resupinate orchid flowers.

Lateral sepal - term used to refer to the two lowermost sepals that extend to the sides, versus the topmost dorsal sepal.

Petal – term used for the segments of the interior ring, one of which can be changed to attract pollinators.

Labellum - A lip in orchids and gingers the highly modified ventral petal that is primarily involved in pollination.

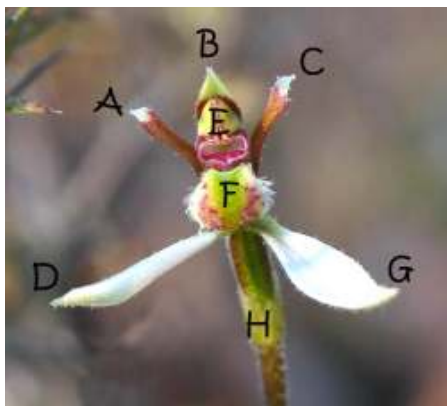
Column - The central fleshy structure in orchid flowers composed of the style and staminal filaments (male & female reproductive parts).

Ovary - The part which contains rudimentary seeds and after fertilisation develops into the fruit.

Test your knowledge:

A =	B =
C =	D =
E =	F =
G =	H =

No peeking at the answers.

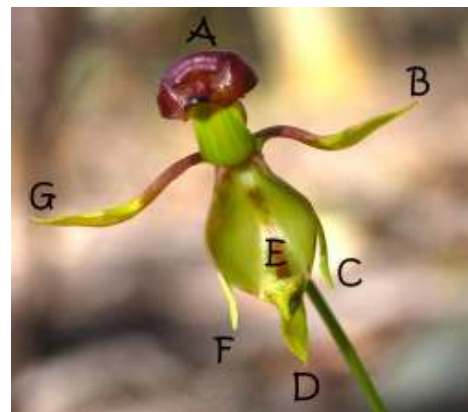


Understanding the relevance of common names and the importance of scientific names will be discussed. I will introduce you to the terms 'clumpers' and 'splitters' and how that relates to orchid nomenclature. Without knowing it, you may already belong to one of these groups.

In the meantime, for those who receive this informative newsletter, you may want to try out your new skills. At the moment, apart from the last of the winter orchids, the early spring orchids are starting to flower.

Here is the next challenge: (note – there is a freebee because you cannot see the ovary from this angle)

A =	B =
C =	D =
E =	F =
G =	



Still no peeking below!

Top left = *Cyanicula caerulea*
 Top right = *Diuris pardina*
 Lower left = *Stegostyla (Caladenia) praecox*
 Lower right = *Pterostylis pedunculata*

Looking forward to seeing you at the **Brisbane Ranges Wildflower Show on Sunday 9 October 2011.**

Bring a friend, leave the pets home and don't forget a pencil.

A = petal,
B = dorsal sepal,
C = petal,
D = lateral sepal,
E = column,
F = labellum,
G = lateral sepal,
H = ovary

A = labellum,
B = lateral sepal,
C = petal,
D = dorsal sepal,
E = column,
F = petal,
G = lateral sepal

There is lots on show and to do at our Wildflower Show Sunday 9 October so don't be shy - please bring all your friends and associates along.

<http://home.vicnet.net.au/~fobr/wildflowershow.html>

Merle and Clive Trigg

This brief article is written in recognition of two wonderful individuals and their contribution to native orchid taxonomy, the Friends of Brisbane Ranges and understanding of the Brisbane Ranges flora.



Merle and Clive Trigg, a very unassuming retired couple have made an immense contribution to the understanding of Australian terrestrial orchids. Their dedication to orchid taxonomy is widely recognised by many botanists. They authored the very successful field guide, *Wildflowers of the Brisbane Ranges*, with Clive being solely responsible for the photographs and Merle the taxonomic information.

To recognise their valued contribution to the Friends of Brisbane Ranges and their friendship and support, Merle and Clive have been awarded Honorary Membership.

Very sadly Merle passed away in August 2010, and FoBR wish to take this opportunity to acknowledge both her and Clive's huge contribution to furthering our knowledge of Australian terrestrial native orchids. The Trigg's enthusiasm and attention to detail has inspired us all to appreciate the beauty and mystery of these plants and other flora of the Brisbane Ranges.

The Trigg's interest in orchids began following the 1983 wildfires which spread throughout much of the natural bushland of the state, including the Otways. They had recently retired and were invited to the Anglesea bushland by friends to view the regeneration of the native flora. To their delight and fascination, they discovered many beautiful terrestrial orchids which were in full bloom as a result of the bushfires.

The Triggs were then invited to attend their first meeting with the Geelong Field Naturalists where they were fortunate to view a slide show of local orchids. This was their turning point; they were seduced and quickly decided they needed to learn more.

And more importantly this was the ideal interest they had been searching for in their retirement.

Merle and Clive had been advised that the Brisbane Ranges was an excellent area for orchids and hence started the first of many visits exploring the park. Their appetite for orchids took them to many places within Victoria with Clive photographing and Merle meticulously documenting their findings.

They then met Jeff Jeannes, a well known botanist who specialises in the taxonomy of Australian terrestrial orchids. Much information was exchanged between Jeff and the Triggs, their field cataloguing of orchids becoming a valuable resource for taxonomy and mapping species throughout the state. In Clive's words "they chased orchids around the state."

During the mid 1990s, following one of their frequent visits to the Brisbane Ranges, they called into the park office in Anakie and introduced themselves to Ranger in Charge, Chris Worrall and his colleague Nola Haines.

They became firm friends with all the staff and from then on they would call into the park office to discuss any exciting discoveries. This became a ritual, whenever the orange Ford drove through the gate, it was down tools and time for a cuppa with some of Merle's delicious homemade cakes. Merle would have her notebook and her well-used map and Clive would bring along a selection of his colour orchid prints for the staff to admire and sometimes keep.

Chris then thought it important that others should share the beauty of these tiny flora and asked if the Triggs would create a photographic display of Brisbane Ranges orchids to be displayed in the Steiglitz courthouse during weekend openings. This they did and produced four beautiful, framed visual displays depicting most orchid species found in the park – Clive provided the photographs and Merle the identification details. This was the forerunner to the book.

The Triggs then discussed with Nola Haines, the possibility of producing a book to draw attention to the magnificent wildflowers of the Brisbane ranges. Nola at that time, was the President of the Friends of Brisbane Ranges and was successful in her application for a Federal "Centenary of Federation" grant specifically to fund the publication of the wildflower book.

The race was on. The Triggs had 12 months to photograph as many wildflowers as possible for the book – they already had the orchids but up until now had very few other genera.

They spent a huge number of hours searching and photographing over 400 species followed by taxonomic researching. Merle's drive for accuracy and perfection produced an excellent reference book.



It is interesting to note that all photos were originally slides as digital photography was in its infancy and much work was done by Clive to ensure the printed colour would depict the true colour of the flowers.

The Friends of Brisbane Ranges wish to acknowledge Merle's and Clive's enormous contributions to furthering the knowledge of Brisbane Ranges flora to an ever widening range of people. The Wildflower book could not have been achieved without Merle's tremendous input, the drive and enthusiasm of Clive and his untiring efforts to achieve the best of photos.

It is with great admiration, that their book and subsequent CD has and will keep providing much pleasure to all who use them.



Merle and Clive Trigg at their Wildflowers Book launch 10 December 2000.

Clive wishes to acknowledge - Nola Haines, Chris Worrall, Chris Lindorff, Jeff Jeannes, Winston Huggins (dec) and Neville Walsh for their valuable assistance in ensuring the book was the best and most accurate for information.

Recently, Clive kindly donated some books to Friends of Brisbane Ranges which we appreciate very much - thank you Clive.

Clive is still living within the Geelong area and enjoying excellent health.

Not to be outdone by the younger generation, Clive is continuing to build on his digital photo library, perfecting the images on an "Apple" computer to display to all on his iPad.

All his friends wish him well and are hopeful to catch up at the Sunday 9 October 2011 Wildflower Show.

Judy Locke