

MAY 2011

In this issue

- Work at Cutting Edge
- Bert Boardman's
- Our new RiC
- FoBR Projects
- For Your Diary
- Frogs with Ade
- Cathy's Column
- Park News
- FoBR website
- Wildflower Show
- Meet a Friend

Upcoming Events Sunday 8 May

Frogs of the Brisbane Ranges with Ade Foster
[**WaterWatch survey** with Deirdre Murphy at Sutherlands Creek in Steiglitz in the afternoon.

Meet 10am at the old Parks Vic depot, 2200 Ballan Rd Anakie

Don't forget to bring your lunch, hat, drinking water, sturdy shoes, sunblock, gloves, camera, binoculars ...and your smile.

FoBR events usually run from 10am to 4pm-ish but if you can only attend the part of the day you are always welcome to join in for whatever amount of time you can.

Friends of Brisbane Ranges inc
C/- Post Office
Anakie VIC 3221

Ph: 5366 0000

Email: cazbarth@yahoo.com.au

Website: <http://home.vicnet.net.au/>

ABN: 30 120 139 564 Reg No. A0032647M



Work at Cutting Edge

The Friends of the You Yangs joined the Friends of the Brisbane Ranges at our April event and we welcomed a new Friends member Gill Gartland. We were able to offer a choice of two activities, propagation or track maintenance. Some people managed to attend part of both activities. Those who stayed at the depot for propagation and the cleanup felt they had a productive day.

By the end of the day the box was filled to capacity with cuttings of *Grevillea chrysophaea* (Golden Grevillea), *Grevillea steiglitziana* (Brisbane Ranges Grevillea), *Grevillea rosmarinifolia* (Rosemary Grevillea) and some correas.

The cuttings are part of the plan to have plenty of plants for sale at the wildflower show in October. We get most of our plants from private property. Permits are required to be able to take cuttings or remove any part of plants in a National Park and Judy had duly been through the process to ensure we had legally obtained cuttings. We used a rooting hormone gel on the cuttings to make sure we have a better chance of success and put them into a specially prepared propagating mix. Grevilleas are difficult to propagate and so with the propagating box that has mist and bottom heat and the gel on the cuttings we are hoping to have lots of plants.

While not everyone could be accommodated at the propagating tables others were involved in raking up leaves, adding fallen branches to the large rubbish pile, trimming shrubs, weeding, replacing a few plants in the gardens and sweeping out a sheds and cleaning up the pots and pot racks. At the end of the day after a lot of information exchange, interesting lunchtime discussions, learning and activity we felt we had experienced another great day being part of a friends group.

Elsbeth Swan

Congratulations to our new Ranger in Charge! Yes our Boxy is now officially 'in charge'.

He is not only responsible for the Brissies but has to share his talents and time with 'other Parks' but we all know his first love is here! **How well do we know him?..** Please send us any (printable) tales about him and we will tell all next month.

Bert Boardman's

We joined a few of the visiting Friends of the You Yangs and headed off to Bert Boardman's Reserve for some track clearing work. It seems that visitors had been having trouble finding the start of the track at the back of the reserve. Can't blame them, we couldn't find it either!

After heading off down the road to the other end of the track, we commenced pulling out and pruning back numerous small trees which had grown up since the fire a few years ago. Some judicious placement of fallen branches helped to define the track route as we went, and we eventually came out in the reserve. A bit more rearrangement of some branches and we managed to make the start of the track obvious, so hopefully there should be less bush-bashing and forging of new routes.



It was good to see and work with the visitors from the You Yangs. Maybe a return visit is in order when their park reopens.

Colin Cook



Ed— We all thank member Paul who took the old propagation heat box home a few months ago and revamped it to a fully operational unit. It was almost a complete rebuild. The stones were temporarily placed on the moisture sensor to avoid people getting misted as they put the pots in the box. The white material is perlite, a sterile white volcanic rock.

Thank you Paul.

FoBR Projects

CyberTracker

I've been plugging away at developing CyberTracker sequences for collecting data in the field for flora and fauna sightings.

One of the first to be done is for the Fungimap project run by the herbarium at the Royal Botanic Gardens. This was recently given a good test run by Wendy during our recent holiday in the Otways. Some good ideas about some modifications should soon be incorporated and the sequence available for others to use.

Another sequence for recording mammal, bird, reptile and amphibian sightings is nearly complete and should also be available after some field testing. This project has only been possible with the generous support of a grant from the Australian Geographic Society.

Useful links

CyberTracker: <http://www.cybertracker.org/>

FungiMap: <http://www.rbg.vic.gov.au/fungimap>

Atlas of Living Australia: <http://www.ala.org.au/>

Remote Cameras

We currently have some Scoutguard remote cameras on loan from the Parks Victoria Signs of Healthy Parks program. Sher and Mick from the Gordon TAFE deployed 4 cameras in multiple places and I deployed a couple more. Apart from some technical problems with one camera, we have had a good set of results.

To date, we have recorded kangaroos, wallabies, deer, Brush Tailed Possums, Bush Rats, mice, foxes, birds and Brush-tailed Phascogales.



The cameras are still out there and will hopefully provide us with further sightings, which can then be followed up when we run our trapping program again during May-June.

Interpretation signs

The three signs illustrating sites of mining activity along Sutherland Creek have been finalised and are currently being manufactured. They should be ready for installation by the end of May. We are also producing a sign for the Lower Stony Creek dam wall, which will also be supplemented by a display board with much more detailed information.

Birds Australia Vic Grant

We have just been successful in obtaining funding from Birds Australia Vic branch for some sound recording devices and software to conduct bird monitoring.

The grant will allow FoBR to purchase 5 sound-activated digital voice recorders and call recognition software. The recorders will be placed in the park and used to record bird calls in multiple locations over extended periods.

The recordings will be processed using the software to identify the presence of birds of interest. The software can also be used for frog and bat calls.

If YOU wish to be involved with any of the above projects, please contact me on 5286 1252 or colin.cook@dpi.vic.gov.au

Colin Cook

For your diary! Join us



Sunday 8 May

Frogs of the Brisbane Ranges with Ade Foster [see left bottom] and **WaterWatch survey** with Deirdre Murphy at Sutherlands Creek in Steiglitz in the afternoon.

Saturday 21 May

APS - Australian Native Plant Sale, Bacchus Marsh 9am to 1pm.



Sunday 19 June

FoBR monthly activity tba including propagation***



Sunday 10 July

FoBR monthly activity tba



Sunday 14 August - FoBR

Annual General Meeting and activity tbc



Sunday 11 September - FoBR

monthly activity tba including preparation for Wildflower Show



Sunday 9 October

Brisbane Ranges Wildflower Show

YOU can get involved see page 4 for more details.

Fungal Ecology workshops are on again this Autumn on Saturdays and Sundays from 23 April to 29 May - from 11am until 5pm at Daylesford, Woodend, Creswick, Trentham, and Wedderburn. \$70. Seminars are being held at Daylesford on Thursday 21 May and Castlemaine on 28 May. See website or email Alison alison@alisonpouliot.com or call 0439 764 344 for details.

FoBR events

If you have ideas of activities for FoBR for this year please email to let us know as we want Friends activities to be relevant and of interest to all of you.

**We have left our plans a little flexible following the floods earlier this year as well as the need for lots of preparation for our best yet Wildflower Show in October.

Frogs with Ade Foster on Sunday 8 May

Ade is going to do a presentation in the morning at the Anakie Depot and then we will head off to the park to see if we can see/hear some of our frogs.

"I've been interested in frogs since I was a kid, and have always kept them as pets. At one stage, a few years back, I had over 50 living in tanks in the house. I've mellowed since then and now I just have a few indoors and have encouraged a few more into my garden with ponds and a frog-friendly habitat. I will be talking to you about the surprisingly rich and diverse frog fauna of the Brisbane Ranges. Hopefully, I can show you, or at least let you hear, some of the local species in their natural habitat".



Cathy's Column

Winter is just around the corner and yet there are those of us who are standing our ground and pretending spring is not far away.

Perhaps even the wildflowers are enjoying the protracted summer but some were a genuine surprise. Here are two spring flowers we found over Easter.



Lagenophora stipitata (Blue Bottle-daisy)



Brunonia australis (Blue Pincushion)

I have been watching for various insects which inhabit our ranges and found two very interesting caterpillars. Neither of these are familiar to me and if anyone has IDs, please let me know.



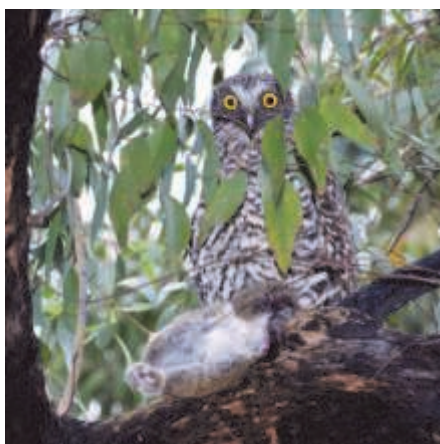
This one is over 10cm long.



The next thing I have discovered is that the birds are not waiting for spring either. First there was a nest and then two eggs. Now the babies have feathers and a big appetite. This is a nest of a New Holland Honeyeater.



Last newsletter, I mentioned looking up ... and that is what Ade & Frank did. Thanks to Frank Scheelings for this image – a beautiful Powerful Owl having breakfast.



So, what to look for now. Well there are heaps of leaves on the ground and not all are litter.

The *Cyrtostylis reniformis* leaves are starting to show themselves and the flowers will



soon follow.

The leaves are identified by the bluish-green colour and the whitish veins.

Many of the *Correa* plants we found had been visited by birds (most likely Crimson Rosellas) so the flowers lay beneath the bush. This one had been spared. What a beauty!



So what does this all prove? I guess - it really does not matter when you go into the Ranges, the point is to be sure to go.

Imagine what the Wildflower Show will be like this spring! Until next issue – look and you shall find.

Cathy Powers

Have you checked out our redeveloped website?

<http://home.vicnet.net.au/~fobr/>

It is an ongoing project so we are keen to hear from you about what YOU want included and if there is anything which is not clear or working well. Email Caz at cazbarth@yahoo.com.au.

We now have a new FoBR email address - friends_br@yahoo.com.au if you have general or wildflower show enquiries.

More to come!

Park News

Here is the latest from Boxy on the access around the park - and updates since the floods earlier this year. Check our the Parks Victoria web for updates http://www.parkweb.vic.gov.au/1park_display.cfm?park=73 or contact Parks Victoria on 13 1963.

- Bert Boardmans Recreation Reserve = Gas BBQ- Repaired and now available for use
- Anakie Gorge Picnic Ground = Open
- Anakie Gorge Walk = Closed between Anakie Gorge Picnic Ground and Nelsons Track
- Anakie Gorge Walk = Open between Stony Creek Picnic Ground and Nelsons Track
- Stony Creek Picnic Ground = Open (Gas BBQ not in operation)
- Ted Errey Nature Circuit = Open
- Switch Road = Open between Ballan Road and Stony Creek Picnic Ground
- Switch Road = Closed between Stony Creek Picnic Ground and McLeans Highway
- McLeans Highway = Open
- Little River Picnic Ground = Open
- Little River Camp Ground = Open
- Lower Stony Creek Reservoir = Open
- Burchell Trail = Closed between Little River Camp Ground and Griffen Hill Track, walkers are advised to use McLeans Highway as an alternative route

Wildflower Show 2011

As you can see by our new flyer we are well into planning our **best Wildflower Show yet ... so why not join us.**

This is **OUR** opportunity to show off our wonderful local wildflowers with a great display, workshops and tours in **October**. Check out our new flyer and more info on [website](#).

What can YOU get involved with NOW -

- Hand delivering promotional information and posters etc in your home or work area
- Helping us to get publicity into local papers, newsletters etc
- Letting us know of any promotional opportunities you know of or contacts you have
- Helping us to ensure our contact lists are up to date Contacting people
- Start working on your photos that Cathy's column has already inspired you to take.
- Let us know any way YOU think you can help.

Please contact Beverley at bevjp@westnet.com.au, Vicky at vicky.grosser@gmail.com or Helena at helenal@pacific.net.au or call Judy at 5366 0000 for more contact information.

Meet a Friend - Nola Haines

Most friends will know about the amazing contribution that Nola Haines has made to FoBR - however for anyone who would like a recap -or any newbies - we have been pursuing Nola for some words about herself for a long time and we are delighted to share with you.

Greetings from Nola



Having just spent a lovely day at Anakie, I am inspired to write, as our Editor and various others have requested, a wee profile.

We, daughter Elizabeth and I, joined FOBR in about 1982. We enjoyed our days in the Brisbane Ranges so much -the freedom of mind and spirit, the industry and learning.

Eventually (time constraints and other things) there were just 3 of us, so "do or die" we continued. A newsletter was created, locals joined, prior members were able to return, and by 1990 we were a healthy happy group. We weeded, we dug, we planted, we laughed, we talked, counted koalas, even a few day seminars were organised. There were wildflower walks, we looked at mines, even renovated an old miners hut, camped o'nite at Old Mill (Hanrahan, folk dancing, a ghost story).

Input came from Rangers, VNPA, environmental experts, and all FOBR. We published our Wildflower Book.

We, (E and I) are personally indebted to all who have crossed our path. As Tennyson said in "Ulysses"

I am a part of all that I have met...

Now in 2011 Elizabeth and her partner and 4 glowing children live on a bush block near Torquay. I still live in Geelong.

But as Tennyson continued

*Yet all experience is an arch
wherethro gleams that untravell'd world
whose margin fades forever and forever
when I move.*

So, I have a bush block under Trust for Nature umbrella near Hamilton, Vic. Ancient

river red gums, good diversity of wildflowers, grassland (one horrible weed), birds, mammals, an ephemeral wetland and creek. I love it. I like to think of ancient footfalls there long ago.

Propagation at Anakie Depot for BR plants, and even some seed collection and propagation for my block is a recent interest.

My other project in the wind of outback NSW (not too much dust I hope) is the purchase of an 1884 stone building at Wilcannia on the Darling River. Built of local sandstone and on the significant building (heritage) list, it has one ruined wall and inside requires quite a lot of work, but with a lot of input from a lot of enthusiastic (volunteer) people, and a heritage grant, I hope it will reach "lock up" stage by the end of this year. My goal (longterm) is to create a not-for-profit community centre for students of art and craft, writing, the environment, anthropology, history, artists in residence, etc. Hope to have a small gallery for display purposes and exhibitions.

As you all know part of my spirit will always have strong connection with the Brisbane Ranges; the Best Friend Award is very special to me. It makes me happy to think I will connect with you all somewhere in our great outdoors! ...here, there, or somewhere else. *Nola*

Editor - Nola was the second Coordinator of FoBR - from 1987 to 1995. When the group was in decline Nola took on the role of co-ordinator to ensure the group continued. She was the driving force of the Group and the main organiser of its activities. Nola has a most friendly, cooperative and encouraging manner. Under her leadership, membership grew and others emerged to take on leadership responsibility. She has maintained her interest, support and involvement. Nola was convenor of the committee responsible for the publication of the "Wildflowers of the Brisbane Ranges" book - a large task. She carried out the role admirably and brought the project to a highly successful conclusion. Nola was recognised by the Victorian Environment Friends Network in 2001 with a Best Friend Award.



Brisbane Ranges Wildflower Show

Showcasing Victoria's Wildflowers

wildflower displays • bus tours • workshops
environmental stalls • photographic display
bushwalking • native plants • cards • books

Sunday October 9th
9.30am - 4.30pm

Anakie Hall, Staughton Vale Rd, Anakie

Cash Sales Only - No EFTPOS
Entry: gold coin donation

For further information & online bus bookings visit
<http://home.vicnet.net.au/~fobr/wildflowershow>

Phone: (03) 5366 0000 | Email: friends_br@yahoo.com.au
This is a family friendly but pet free event.



HOW TO GET TO THERE

The wildflower bus tour explores areas filled with wonderful wildflowers in the Brisbane Ranges National Park. There will be two opportunities to exit the bus and observe some of the 613 native plants found in the park. The tour will also take you through the Steiglitz Historic Park where you will see historical buildings dating back to the gold rush era.

The free one-hour workshops will be held at the Anakie Hall. You will have the opportunity to learn how to identify native plants by key characteristics while at the macro-photography you will get some tips on the best way to photograph plants up close.

Program

Bus Tour - Arrive 20mins earlier for registration (\$10pp book online)
Workshops - arrive 10mins earlier to reserve a spot (free)

	AM Sessions	PM Sessions
Wildflower Bus Tours	10.00 - 12.00	1.30 - 3.30
Macro Photography Workshop	10.00 - 11.00	1.00 - 2.00
Orchid Identification Workshop	11.30 - 12.30	2.30 - 3.30

Friends of Brisbane Ranges