



### Next Meeting

**Sunday 14<sup>th</sup> October**

#### Meet at;

10am at the  
Staughtonvale/Anakie Hall

#### Activities;

##### Wildflower Show.

Support your show, join those who have volunteered to assist with the running of the show or just come along to see the result of many hours of hard work.

#### What to bring;

All the usuals of course, but also bring all your friends and make the most of what is on offer.

### Next Month

**November 10<sup>th</sup> ;**

Koala research update and survey presented and led by a well known authority.

### In this Issue

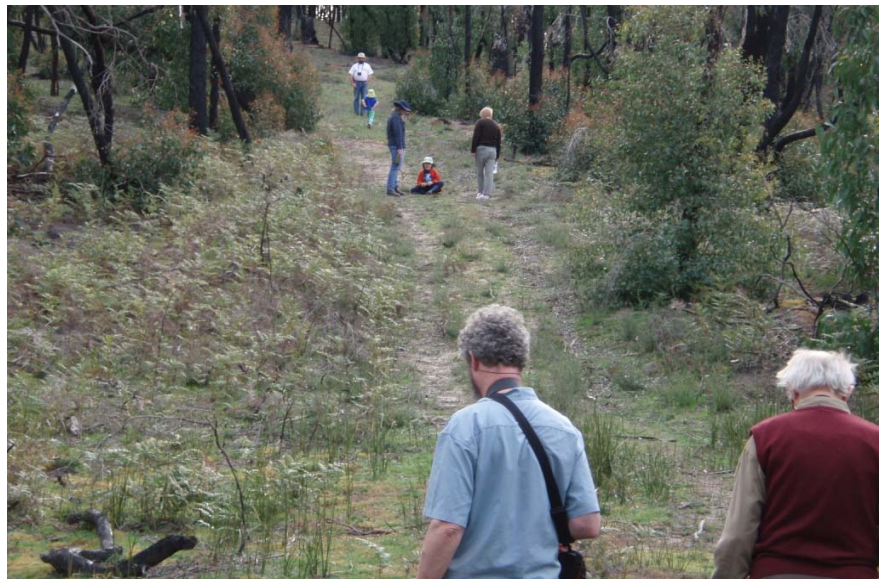
- Last month's activity
- House keeping
- Plant matters

### Last Month's Activity

**Colin Cook**

Our last activity centred on the Anakie Depot. It was starting to look a bit neglected and weedy so a working bee and tidy up was the order of the day. Many weeds were pulled, leaves swept and bushes pruned, leaving the depot looking much more respectable. Now, if I can only get everyone round to my garden.... After lunch, we headed off for a walk along Wildflower Track and Teatree Track. Due to the dry conditions there weren't many wildflowers, but those that were out provided a pleasing spectacle.

One of the items carted on the walk was the recently acquired digital camera (for those who wish to know, it's a Canon S5 IS) and quite a few photos were taken of participants and wildflowers. The camera will be stored at the Bacchus Marsh office and should be available at every Friends activity for anyone to use. In order to make these photos readily accessible to as many as possible, I have set up a free web page using Picasa web albums from Google and placed as many photos up as I currently have. The website can be found at <http://picasaweb.google.com.au/brisbane.ranges/>. If you wish to provide any digital photos of Friends activities that can also be placed on the website, please contact me.



*"Lovely day for a stroll"*

### Up Coming Events

**December 9<sup>th</sup>;**

**Combined Christmas & 25<sup>th</sup> Anniversary celebration.**

This is coming around very quickly, so considering the amount of work and time put in by the Wildflower Show Committee to ensure the show's success, it is time for some others to put their hands up and take on the organisation for this event. So don't be shy, get in and have a go and register your name with the group's secretary.

#### President

Colin Cook  
[Colin.Cook@dpi.vic.gov.au](mailto:Colin.Cook@dpi.vic.gov.au) Ph 52 861 252

#### Secretary

Helena Lindorff  
[hlindorff@people.net.au](mailto:hlindorff@people.net.au)

#### Newsletter

Peter Box  
[pbox@parks.vic.gov.au](mailto:pbox@parks.vic.gov.au) Ph 53 660 055



## Nature Watch Brisbane Ranges Dieback Community Monitoring Project

**Nature Watch is a community environmental monitoring program that relies on volunteers like you to get involved.**

Community monitoring of the health of Grass Trees in response to the soil pathogen *Phytophthora cinnamomi* that causes dieback, will be carried out in the Brisbane Ranges National Park (80km west of Melbourne). It would be great if you could come along and help out.

Anyone is welcome to volunteer and full training is provided!

Below are activities that you can get involved in as a part of this project.

**Monitoring days** (including training) will be run on the following days from 10am -4:30pm:

**Sat 27th Oct\* Sun 28th Oct\* Sat 3rd Nov  
Sun 4th Nov Sat 17th Nov Sun 18th Nov**

\*These days will predominantly involve setting up monitoring sites (putting in stakes, labelling sites etc.)

**Booking for these days is essential and numbers are limited.** On booking you will be provided with a meeting point and pre-reading material for the project. Book in for one or several days.

**More information or bookings contact the program coordinator Caitlin Griffith:**

[caitling@vnpa.org.au](mailto:caitling@vnpa.org.au) or (03) 9341 6513 or check [www.vnpa.org.au](http://www.vnpa.org.au)

# Powerful Owl

DNA needed for genetic study 2004

- Feathers, injured and dead animals are all excellent sources of DNA
- Any information about the location of live, injured or dead animals would be most appreciated
- Your help could contribute to research and conservation of the species!

Fiona Hogan  
 School of Ecology & Environment, Deakin University, Melbourne Campus  
 221 Runwood Hwy, Burwood, Victoria 3125  
 Phone: 0412 479 250 Email: [f.hogan@deakin.edu.au](mailto:f.hogan@deakin.edu.au)



Ok I know, what are they? Well I guess you will just have to come to the wildflower show and find out.

#### President

Colin Cook

[Colin.Cook@dpi.vic.gov.au](mailto:Colin.Cook@dpi.vic.gov.au) Ph 52 861 252

#### Secretary

Helena Lindorff

[hlindorff@people.net.au](mailto:hlindorff@people.net.au)

#### Newsletter

Peter Box

[pbox@parks.vic.gov.au](mailto:pbox@parks.vic.gov.au) Ph 53 660 055